



SHENZHEN WITROY PV TECHNOLOGY CO.,LTD



E-mail: overseas@witroy.com

Tel: +86-755-29306202

Add: Floor 3, Building 3, Huike Industrial Park, Shiyan Street, Baoan District, Shenzhen, China



WITROY

NBQ-EU
MICRO INVERTER



Brief Introduction

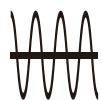
Shenzhen Witroy PV Technologies Co., Ltd. is an international ODM/OEM manufacturing enterprise specializing in industrial, new energy, medical, industrial control, and high-end consumer power supplies. We create a comprehensive product supply chain system for our customers, offering tailored products as well as standard product lines to meet specific process requirements. Our team members come from Fortune 500 companies or well-known domestic and international brands, with over 15 years of experience in providing one-stop services for product design, supply chain systems, and product manufacturing solutions.

We are always committed to the refined management of customer products, providing customers with more valuable product optimization solutions and cost solutions. Currently, our main products include UPS, inverters, charging piles, new energy vehicles, smart controllers, medical power supplies, PCBA processing, finished assembly, testing, and other services.

Production Line



NBQ-EU
400W-1000W AC230V



Pure sine wave inverter



Reliable performance



High efficiency MPPT engine



Simple installation



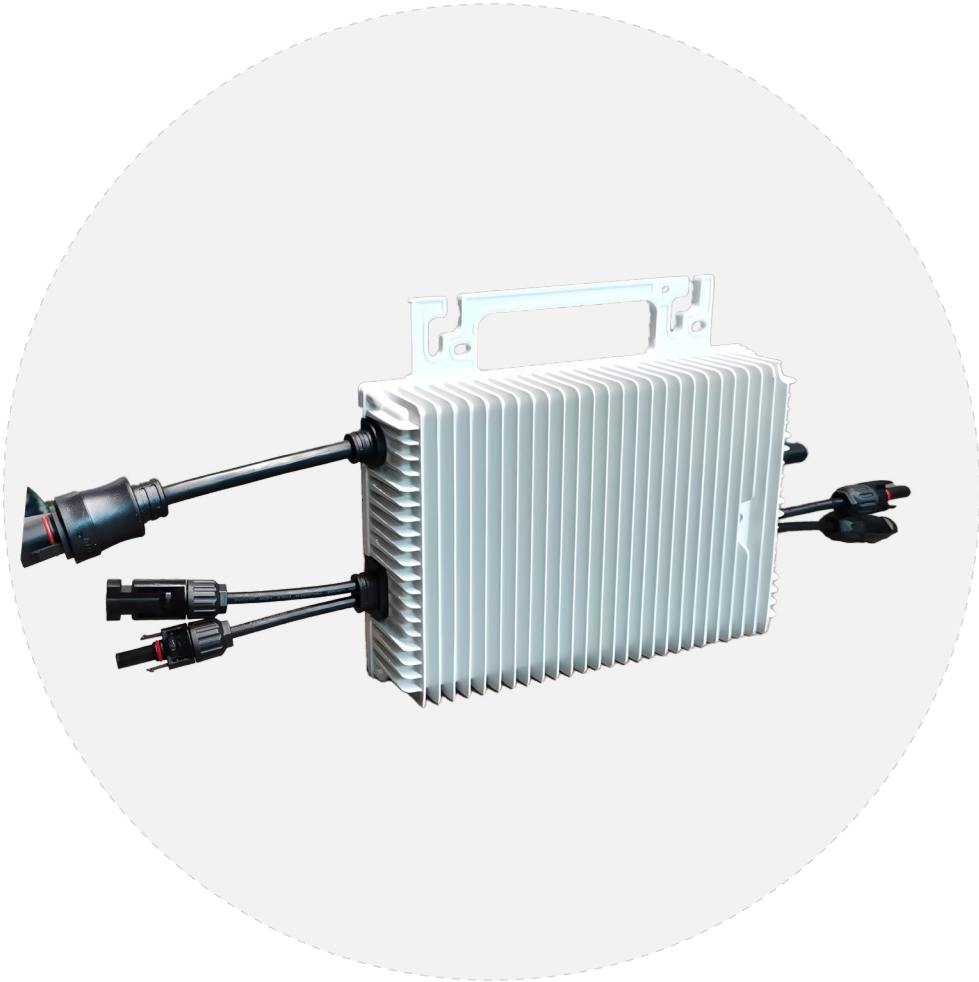
Build-in WiFi module, remote monitoring



Multiple protection

| Model | NBQ400-EU | NBQ600-EU | NBQ800-EU | NBQ1000-EU |
|-----------------------------------|--------------------------------------|------------|----------------|------------|
| Input Data (DC) | | | | |
| Commonly used module power (W) | 200~430W*1 | 275~530W*1 | 275~530W*2 | 275~530W*2 |
| Maximum input voltage (V) | 60 | | | |
| MPPT voltage range (V) | 22-55 | | | |
| Input working voltage rang (V) | 16-60 | | | |
| Maximum input current (A) | 14A*1 | | 16A*2 | |
| Number of MPPTs | 1 | | 2 | |
| Number of inputs per MPPT | 1 | | | |
| Output Data (AC) | | | | |
| Rated output power (VA) | 400 | 600 | 800 | 1000 |
| Rated output current (A) | 1.74 | 2.61 | 3.47 | 4.34 |
| Nominal output voltage/range (V)* | 230 | | | |
| Nominal frequency/range (Hz) | 50/60 | | | |
| Adjustable power factor | >0.99 | | | |
| Total harmonic distortion | <5% | | | |
| Efficiency | | | | |
| Peak efficiency | 96.5% | | | |
| Nominal MPPT efficiency | >99.5% | | | |
| Night power consumption (mW) | <50 | | | |
| Mechanical Data | | | | |
| IP Grade | IP67 | | | |
| Ambient temperature range (°C) | -40°C to +65°C | | | |
| Protective class | Class I | | | |
| Dimensions (W*H*D) | 181*193*38.5mm | | 227*195.5*42mm | |
| Weight (kg) | 2.54 | | 3.78 | |
| Cooling | Natural cooling | | | |
| Features | | | | |
| Communication with cloud | 2.4G Wi-Fi | | | |
| Communication with local app | Bluetooth | | | |
| Topology | Galvanically Isolated HF Transformer | | | |
| Interface | LED & App | | | |
| Certification compliance | EN50549, VDE, CE-LVD, CE-EMC, CE-RED | | | |

NBQ-EU
1200W-2000W AC230V



Pure sine wave inverter



Reliable performance



High efficiency MPPT engine



Simple installation



Build-in WiFi module, remote monitoring



Multiple protection

| Model | NBQ1200-EU | NBQ1600-EU | NBQ2000-EU |
|-----------------------------------|--------------------------------------|----------------|------------|
| Input Data (DC) | | | |
| Commonly used module power (W) | 275~530W*2 | 275~530W*4 | 275~530W*4 |
| Maximum input voltage (V) | 60 | | |
| MPPT voltage range (V) | 22-55 | | |
| Input working voltage rang (V) | 16-60 | | |
| Maximum input current (A) | 16A*2 | 16A*4 | 16A*4 |
| Number of MPPTs | 2 | 4 | 4 |
| Number of inputs per MPPT | 1 | | |
| Output Data (AC) | | | |
| Rated output power (VA) | 1200 | 1600 | 2000 |
| Rated output current (A) | 5.21 | 6.95 | 8.69 |
| Nominal output voltage/range (V)* | 230 | | |
| Nominal frequency/range (Hz) | 50/60 | | |
| Adjustable power factor | >0.99 | | |
| Total harmonic distortion | <5% | | |
| Efficiency | | | |
| Peak efficiency | 96.5% | | |
| Nominal MPPT efficiency | >99.5% | | |
| Night power consumption (mW) | <50 | | |
| Mechanical Data | | | |
| IP Grade | IP67 | | |
| Ambient temperature range (°C) | -40°C to +65°C | | |
| Protective class | Class I | | |
| Dimensions (W*H*D) | 227*195.5*42mm | 342*225.4*50mm | |
| Weight (kg) | 3.78 | 6.7 | |
| Cooling | Natural cooling | | |
| Features | | | |
| Communication with cloud | 2.4G Wi-Fi | | |
| Communication with local app | Bluetooth | | |
| Topology | Galvanically Isolated HF Transformer | | |
| Interface | LED & App | | |
| Certification compliance | EN50549, VDE, CE-LVD, CE-EMC, CE-RED | | |